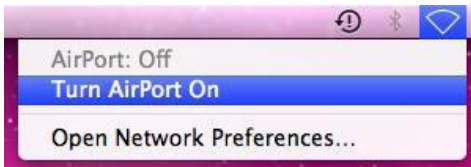


Connecting to the Loyola Wireless Network

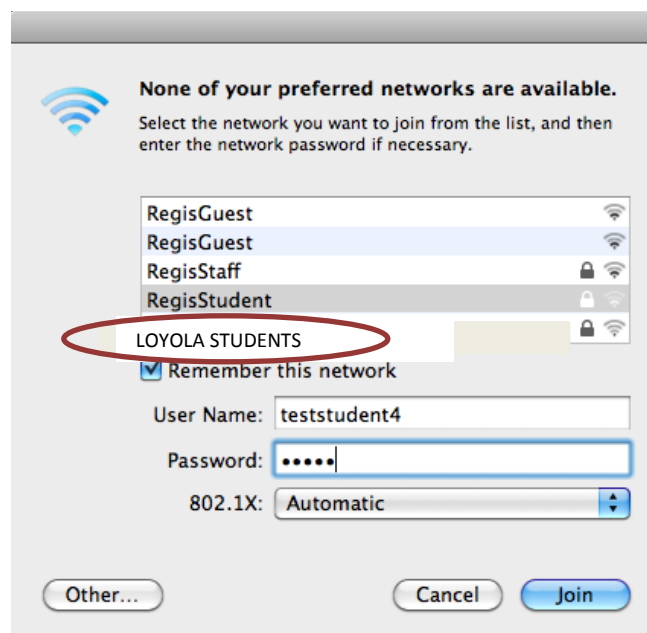
Student Mac OS X Edition

This step-by-step guide will enable you to connect to the Loyola Wireless Network, and to troubleshoot some issues that you may encounter. It is intended for use with Macs running the latest version of Mac OS X.

1. Turn AirPort On: This is located in the Status Bar on the top right corner of the screen.



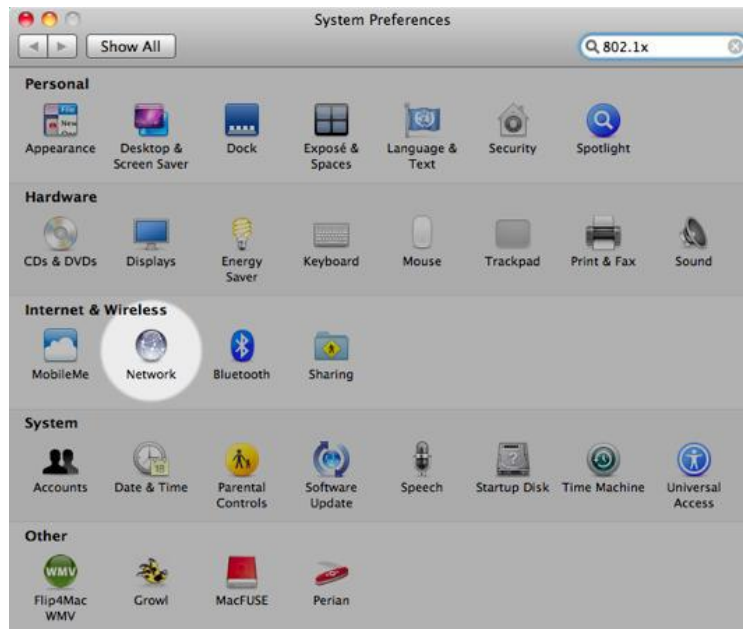
In the window that appears, select LOYOLASCHOOL and enter your Loyola username and password. Press Join.



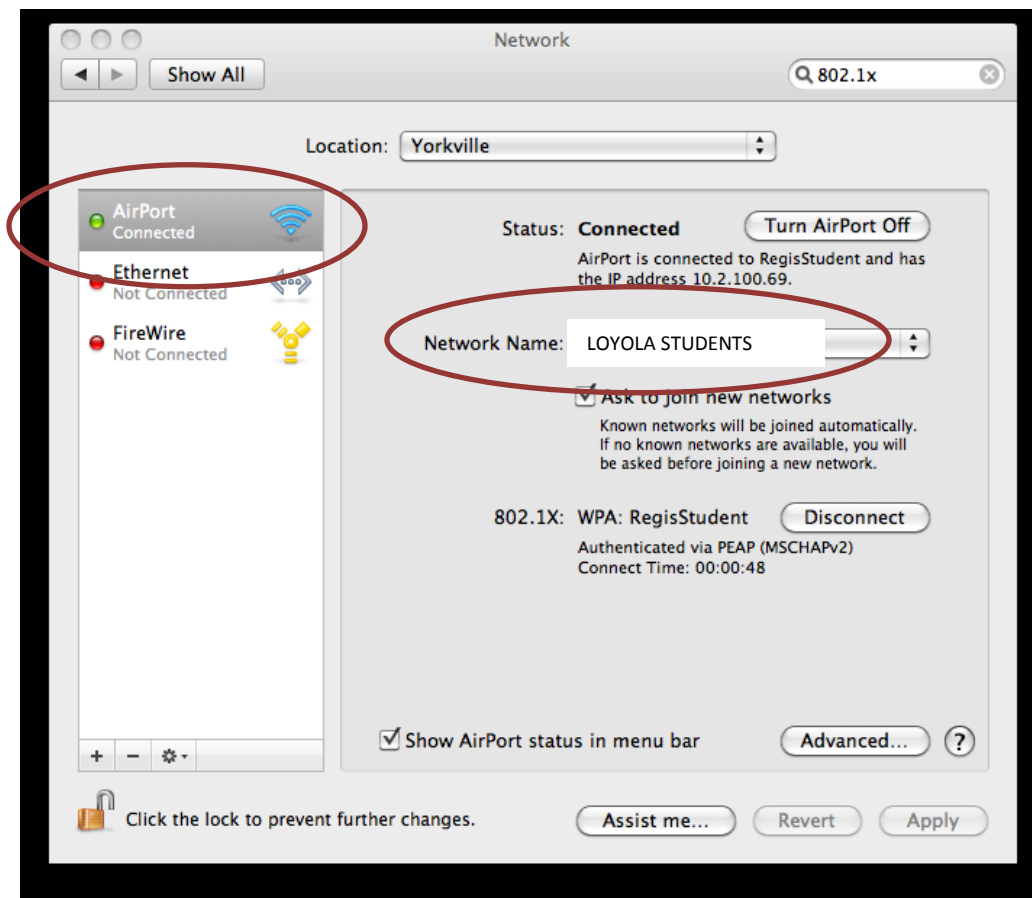
2. Open System Preferences:
This is always accessible through the Apple Menu in the top left corner of the screen.



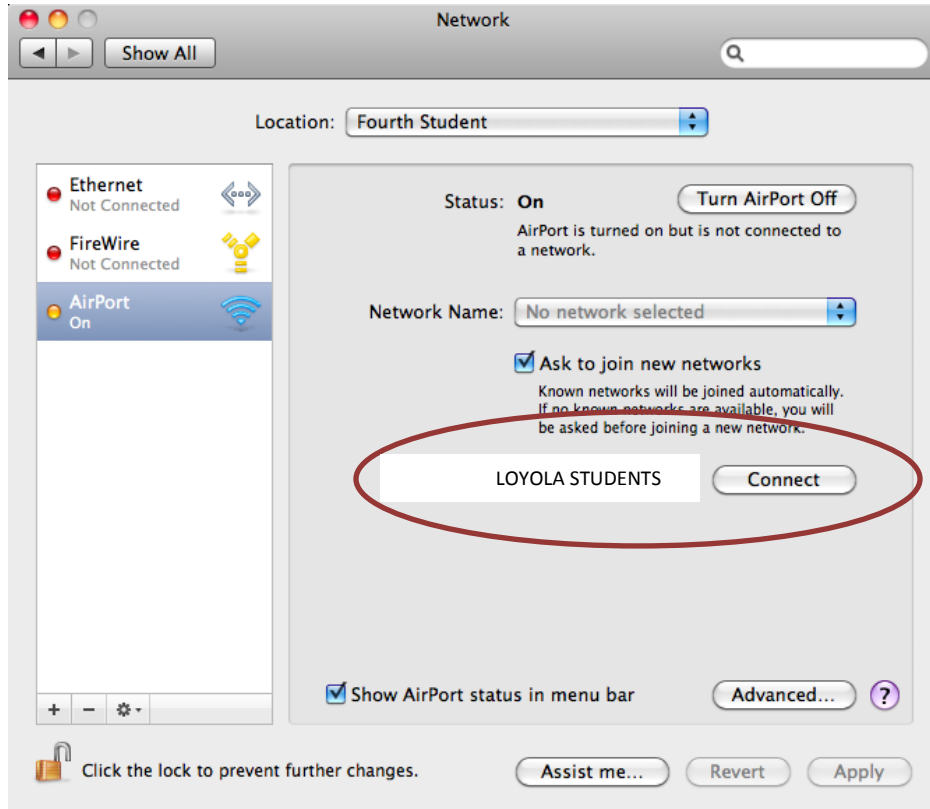
3. Open the Network Preference Pane: This is accessed by clicking on the highlighted “Network” icon.



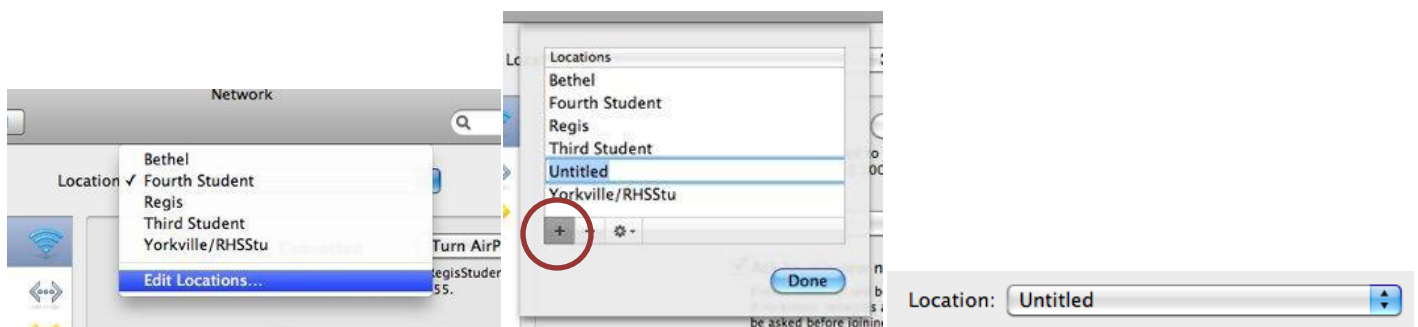
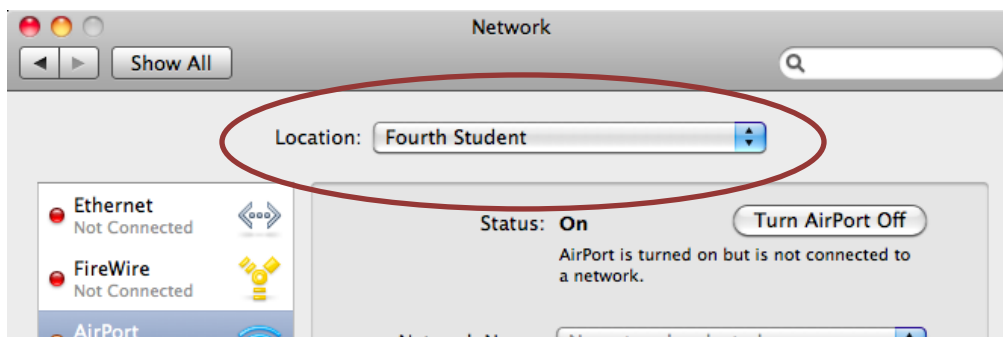
4. Choose AirPort from the list on the left, and where it says “Network Name”, and ensure that LOYOLASCHOOL is selected. If the indicator next to AirPort is green and says “Connected”, you are done. Launch any browser to start using the Internet.



5. If the indicator is not green, ensure that you click the Connect button to the right of the 802.1X line:

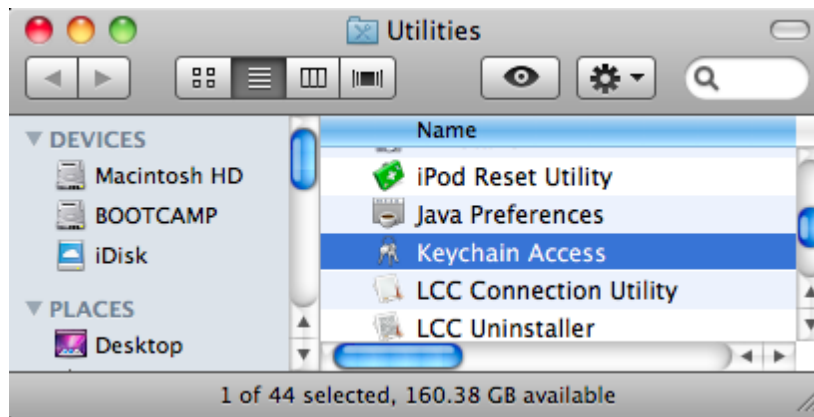
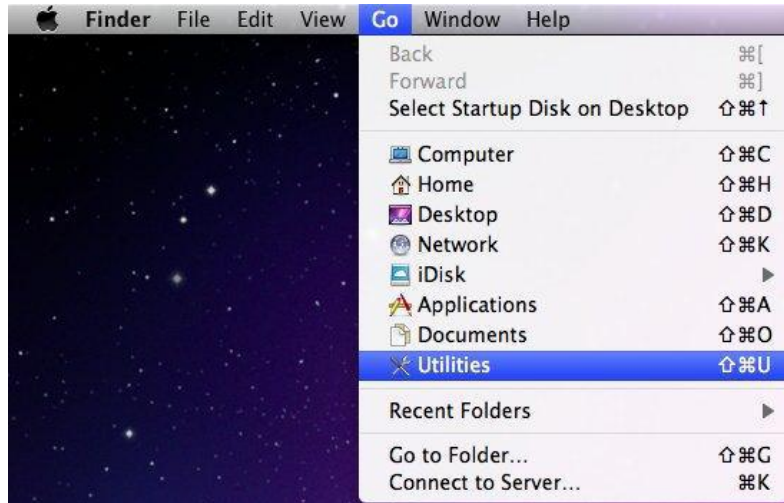


6. If authenticating does not resolve your issue, create a new Location (note that you may need to re-authenticate to other wireless networks after doing this):



Then repeat steps 1-5.

7. If creating a new Location does not resolve your issue, reset your Keychain (note that this removes *all* saved passwords and certificates in your user):



Then log out, log back in, and repeat steps 1-6 if necessary!