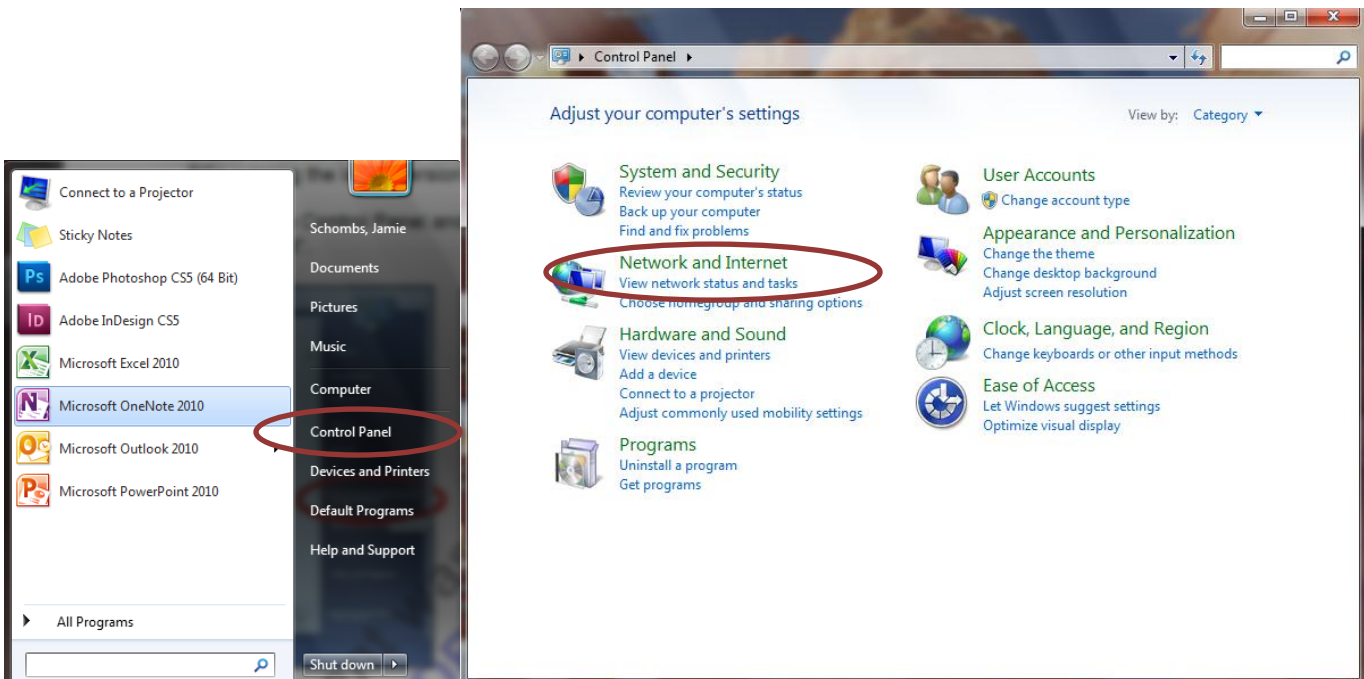


Connecting to the Loyola Wireless Network

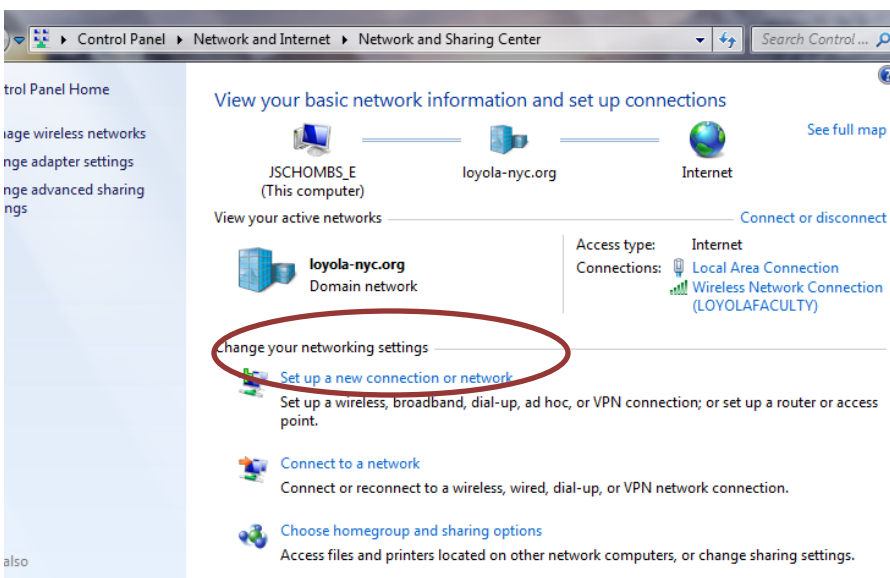
Student Windows Edition

This step-by-step guide will enable you to connect to the Loyola Wireless Network, and to troubleshoot some issues that you may encounter. It is intended for use with PCs running the latest version of Windows, which of this writing is Windows 7.

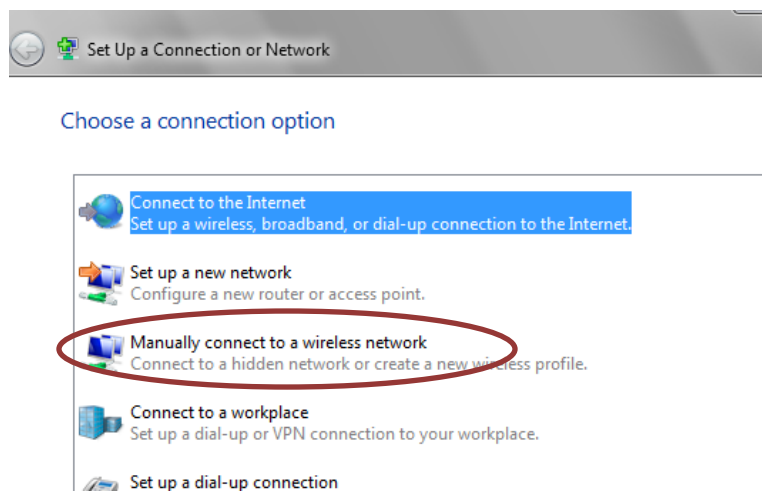
1. Open the Control Panel and select “View network status and tasks” under *Network and Internet*.



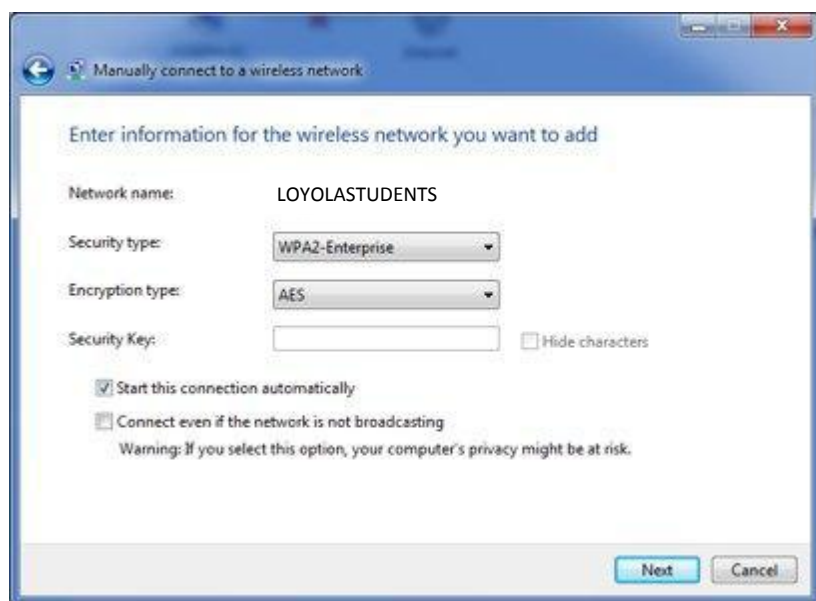
2. Click “Set up a new connection or network”.



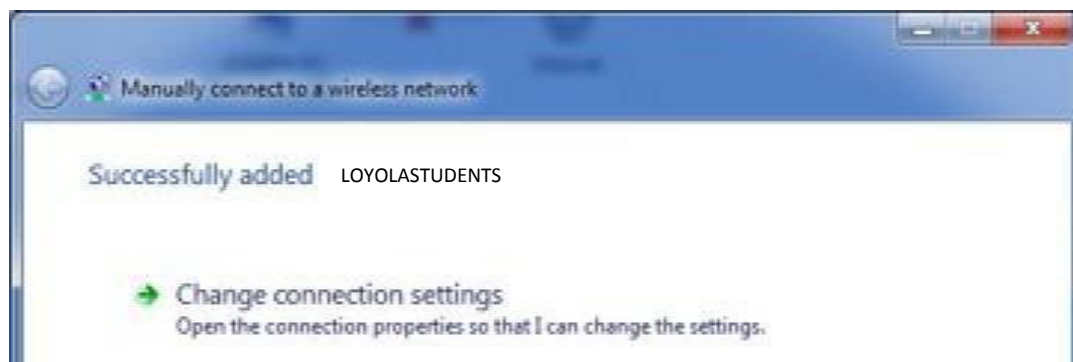
3. Select “Manually connect to a wireless network”, then click *Next*.



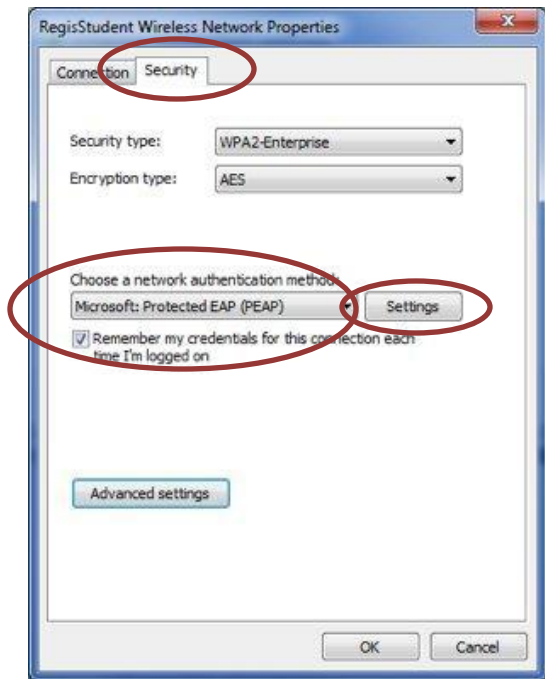
4. Ensure that the following manual settings are entered exactly, then press *Next*.



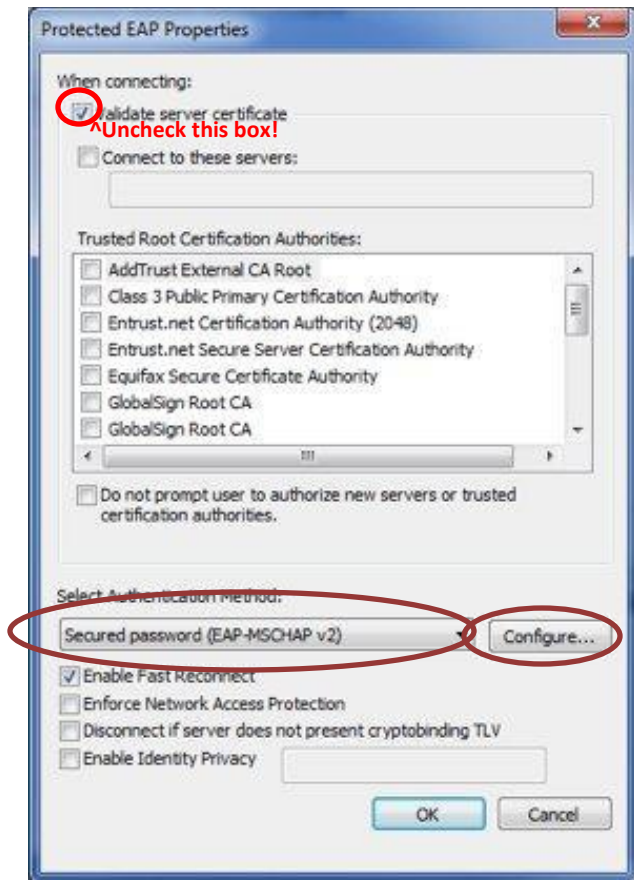
5. On the ensuing screen, click “Change connection settings”.



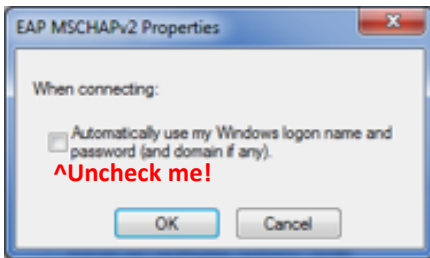
6. In the Security tab, ensure “Microsoft: Protected EAP (PEAP)” is selected, then click *Settings*.



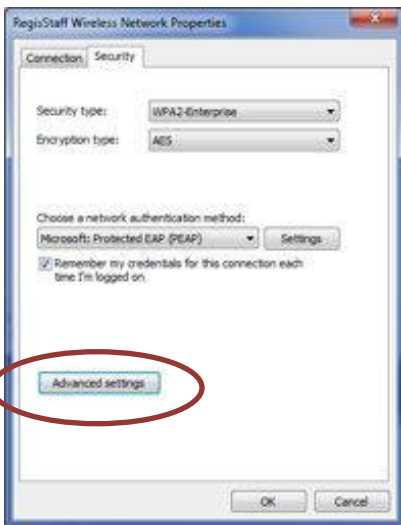
7. **Uncheck** “Validate server certificate”, ensure “Secured password (EAP-MSCHAP v2)” is selected under *Select Authentication Method*, then click *Configure*.



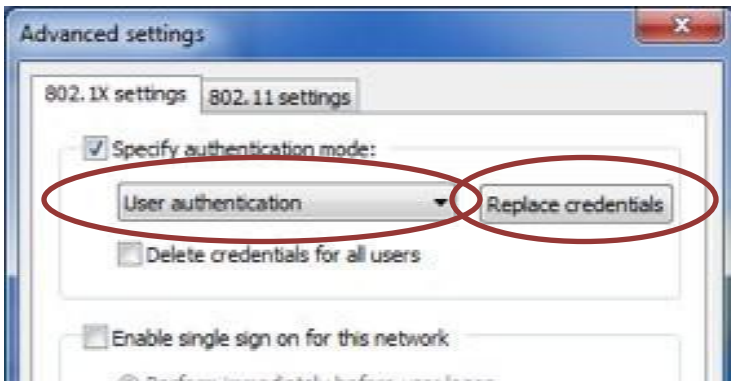
8. **Uncheck** the box.



9. Click "OK" twice, so you see the "LOYOLASCHOOL Wireless Network Properties" window again. Click *Advanced Settings*.



10. In the first tab only, choose to Specify Authentication Mode with User authentication, then click Replace Credentials.



11. Enter your Loyola username and password, and click OK for all windows. If your computer does not connect within a minute, disconnect and reconnect to the wireless network.

